

# YAKI BÓI

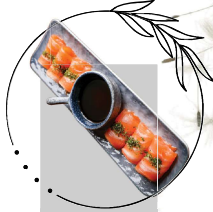
**SNACK** great for sharing

**PACIFIC OYSTERS [GF/NF/DF] | 4.5 EACH 24 FOR 6 PCS**

*Natural with lemon wedge Or sweet apple mignonette*



**SALMON SASHIMI [NF/DF] | 16.9**  
*6pcs, Tasmanian king salmon, wasabi, sashimi soy, nori*



**SALMON TARTARE [NF/DF] | 9.9**  
*Fried sushi rice, salmon, mayo, fish roe*



**CARPACCIO KINGFISH [GF/NF/DF] | 18.9**  
*King fish, pickled beetroot, shiso, rocket, pickled ginger, crispy capers*



**TERIYAKI CHICKEN WINGS | 15.9**  
*1/2 kilo wings (10pcs), teriyaki sauce*



**the important bits**

V= Vegetarian | VG = Vegan | GFO = Gluten Free Option  
NF = Nut Free | DF = Dairy Free

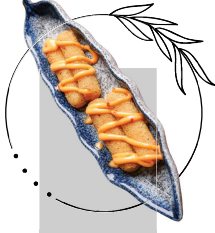
15% public holiday surcharge will be applied  
Corkage surcharge \$15

**SNACK PLATTER | 35.9**

*2pcs wagyu cheeseburger spring rolls, 2pcs prawn tempura, 6pcs mozzarella sticks, 6pcs chicken dumplings, chips & salads*



**MOZZARELLA STICK | 9.9**  
*4pcs, kimchi mayo*



**WAGYU CHEESEBURGER SPRING ROLLS | 8.9**

*2pcs, kimchi aioli*



**TAKOYAKI [NF/DF] | 8.9**  
*6pcs, octopus balls, okonomi sauce, mayo, bonito flakes*



**PRAWN TEMPURA | 13.9**

*4pcs, Kewpie mayo*



**VEGGIE TEMPURA [V/NF/DF] | 11.9**  
*Eggplant, green bean, okra, pumpkin, sweet potato*



**VEGE SPRING ROLLS [VG/NF/DF] | 8.9**

*6pcs, sweet chilli*



**the important bits**

V= Vegetarian | VG = Vegan | GFO = Gluten Free Option  
NF = Nut Free | DF = Dairy Free

15% public holiday surcharge will be applied  
Corkage surcharge \$15

# BURGER with chips

**UNAGI HOUSE [NF] | 31.9**

*Japanese Eel, fish roe, iceberg lettuce, tomato, egg, pineapple, avocado, dried seaweed, mayo, eel sauce*



**W.T.F [GFO] | 28.9**

*Dbi angus beef patties, dbi liquid cheese, dbi bacon, hash brown, iceberg lettuce, onion, Japanese pickles, mozzarella sticks, BBQ sauce, Yaki sauce, honey*



**THE WASABI [GFO/NF] | 23.9**

*Angus beef patty, wasabi cheese, coleslaw, tomato, bacon, Japanese pickles, wasabi mayo*



**CANBERRA SUNSET [GFO] | 23.9**

*Angus beef, liquid cheese, bacon, iceberg lettuce, pineapple, tomato, onion, pesto aioli, honey*



**YAKI CHICKEN | 23.9**

*Crispy chicken, tomato, iceberg lettuce, kimchi aioli, sweet chilli*



**SCHNITZEL CHICKEN | 18.9**

*150g Japanese chicken breast katsu, liquid cheese, tomato, crushed garlic, iceberg lettuce, kimchi aioli*



**EDAMAME [GF/NF/VG/DF] | 7.9**

*Salt or chilli flakes*



**CHICKEN KARAAGE | 13.9**

*Japanese chicken bite, Kewpie mayo*



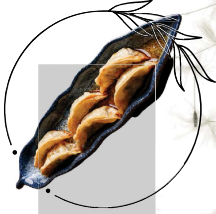
**CHICKEN DUMPLINGS [NF/DF] | 8.9**

*6pcs, chicken, shiitake mushroom, soy*



**VEGGIE DUMPLINGS [V/NF/DF] | 8.9**

*6pcs, soybean, onion, green onion, leek, tofu, soy*



**WAFU CHIPS [NF/DF] | 8.9**

*Mayo, okonomi sauce, bonito flakes*



## the important bits

V= Vegetarian | VG = Vegan | GFO = Gluten Free Option  
NF = Nut Free | DF = Dairy Free

15% public holiday surcharge will be applied  
Corkage surcharge \$15

## the important bits

V= Vegetarian | VG = Vegan | GFO = Gluten Free Option  
NF = Nut Free | DF = Dairy Free

15% public holiday surcharge will be applied  
Corkage surcharge \$15

## BOWL Japanese infused

### CLASSIC CHEESEBURGER [NF/GFO] | 17.9

150g angus beef patty, iceberg lettuce, tomato, pickles, mustard, ketchup



### KORROKE & AVO [V/VGO] | 17.9

Japanese croquette, iceberg lettuce, avocado, onion, liquid cheese, Japanese pickle, special sauce



### YAKI VEGAN [VG/DF] | 28.9

Vegan patty, vegan cheddar cheese, iceberg lettuce, Japanese pickles, onion, tomato, vegan kimchi aioli



### EXTRA FOR BURGER

Extra Beef Patty	7
Extra Crispy Chicken	6
Black Bun	1
Gluten Free Bun	3
Dairy Free Bun	2

### SAUCE

Vegan Kimchi Aioli / Kewpie Mayo	3
Kimchi Aioli / Wasabi Mayo	2
Vegan Aioli / Basil Aioli	2
Sweet Chilli / Thousand Island	2

### the important bits

V= Vegetarian | VG = Vegan | GFO = Gluten Free Option  
NF = Nut Free | DF = Dairy Free

15% public holiday surcharge will be applied  
Corkage surcharge \$15

### SMOKY SALMON UDON [NF] | 22.9

Smoky salmon, herbs, cream, onion, udon noodles, bonito flakes, nori



### MEATBALL UDON [DF/NF] | 22.9

Roasted beef meatball, tomato sauce, herbs, udon noodles, bonito flakes



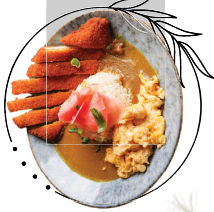
### MUSHROOM CARBONARA [V/NF] | 22.9

Mushroom, onion, herb, cream, udon noodles, shallots



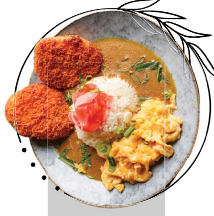
### CURRY CHICKEN DON [NF] | 18.9

Chicken katsu, scrambled egg, Japanese curry, sushi rice, pickled ginger, shallots



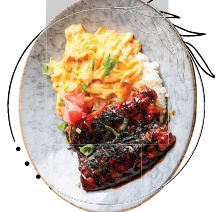
### CURRY KORROKE DON [V/NF] | 18.9

Japanese croquette, scrambled egg, Japanese curry, sushi rice, pickled ginger, shallots



### UNAGI DON [NF/DF] | 29.9

Japanese unagi, scrambled egg, sushi rice, fish roe, kabayaki sauce, pickled ginger, shallots



### the important bits

V= Vegetarian | VG = Vegan | GFO = Gluten Free Option  
NF = Nut Free | DF = Dairy Free

15% public holiday surcharge will be applied  
Corkage surcharge \$15

# PIZZA Kid 9" or Adult 11"

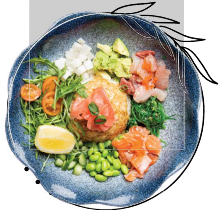
## PORK BELLY DON [NF/GF] | 23.9

House cooked pork belly, spice, rice, scrambled egg, okonomiyaki sauce



## POKE BOWL [NF/GFO/DF] | 24.9

Kingfish, salmon, fish roe, mixed salad, edamame, seaweed salad, cherry tomato, avocado, cucumber, radish, rice, pickled ginger, roasted sesame dressing  
Served with miso soup



## SMOKY JACKFRUIT POKE BOWL [GF/NF/VG/DF] | 24.9

Jackfruit, mixed salad, edamame, seaweed salad, cherry tomato, onion, avocado, cucumber, radish, rice, pickled ginger, vegan kimchi aioli



## TAKOYAKI PARTY [NF] | 22.9/24.9

Kewpie mayo base, takoyaki, prawn, octopus, caramelized onion, bonito flakes, okonomiyaki sauce, Kewpie mayo



## JAPANESE UNAGI [NF] | 22.9/24.9

Kewpie mayo base, Japanese unagi, mushroom, caramelized onion, egg, dried seaweed, shallots, sesame, eel sauce



## PEKING DUCK [GFO/NF] | 22.9/24.9

Tomato & hoisin base, duck breast, shallot, jalapenos, honey, cucumber, coriander



## MARGHERITA [V/GFO/VGO/NF] | 18.9/20.9

Tomato base, bocconcini, oregano, basil



## PESTO CHICKEN CLUB [GFO] | 20.9/22.9

Tomato & garlic base, teriyaki chicken, tomato, onion, mozzarella with avocado, rocket, pesto aiolio and honey



## TERIYAKI CHICKEN [GFO] | 20.9/22.9

Tomato base, teriyaki chicken, shallot, caramelised onion, bocconcini, kimchi aioli



### the important bits

V= Vegetarian | VG = Vegan | GFO = Gluten Free Option  
NF = Nut Free | DF = Dairy Free

15% public holiday surcharge will be applied  
Corkage surcharge \$15

### the important bits

V= Vegetarian | VG = Vegan | GFO = Gluten Free Option  
NF = Nut Free | DF = Dairy Free

15% public holiday surcharge will be applied  
Corkage surcharge \$15

## DESSERT

### FRUIT TRUFFLE [MCN/V/DF] 10

*Fruit pieces & brownie bathed in custard & condensed milk*



### JAPANESE BINGSU [GF/NG/V/DF] 9

*Japanese Bingsu [GF/NG/V/DF] 9*



### WAFFLE BASKET ICE CREAM 14

*Chocolate coated waffle basket, 3 colour ice cream, chocolate sauce, chocolate flake*



## SOFT DRINK

**GLASS SOFT DRINK | 4**  
*Pepsi, Pepsi Max, Lemonade, Sunkist, Solo*

**LEMON LIME BITTERS | 5**

**JUG SOFT DRINK | 12**  
*Pepsi, Pepsi Max, Lemonade, Sunkist, Solo*

**JUICE | 6**

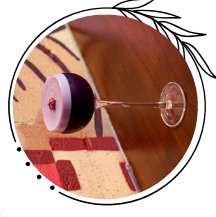
*Pineapple, Orange, Apple, Grapefruit, Cranberry*

**JUG JUICE | 18**

*Pineapple, Orange, Apple, Grapefruit, Cranberry*

**MILKSHAKES | 9**

*Chocolate, Vanilla, Strawberry*  
*Your choice of Full cream, Oat, Soy, Almond*



### TRUFFLE BEEF [GFO] | 20.9/22.9

*Béchamel base, wagyu beef, mushroom, caramelised onion, bocconcini, truffle aioli, honey, basil*



### CAJUN CHICKEN [GFO] | 20.9/22.9

*Sweet chilli base, teriyaki chicken, mushroom, onion, green capsicum, cajun seasoning, mozzarella*



### BIGFOOT BBQ [GFO] | 20.9/22.9

*Tomato base, teriyaki chicken, virginia ham, chorizo, pepperoni, bacon, BBQ sauce*



### THE VEGGIE [V/GFO/VGO] 20.9/22.9

*Tomato base, onion, mushroom, green capsicum, tomato, basil, bocconcini, pesto aioli, honey*



### BBQ JACKFRUIT [VG/NF/GFO/DF] | 22.9/24.9

*BBQ base, green capsicum, onion, smoky jackfruit, vegan kimchi aioli, basil*



### the important bits

V= Vegetarian | VG = Vegan | GFO = Gluten Free Option  
NF = Nut Free | DF = Dairy Free

15% public holiday surcharge will be applied  
Corkage surcharge \$15

### the important bits

V= Vegetarian | VG = Vegan | GFO = Gluten Free Option  
NF = Nut Free | DF = Dairy Free

15% public holiday surcharge will be applied  
Corkage surcharge \$15

## TAP BEER

YAKI BOI LAGER Lager, Canberra

CAPITAL YUZU SELTZER Hard Seltzer, Canberra

ASAHI SUPERDRY Lager, Osaka, Japan

SAPPORO PREMIUM Lager, Hokkaido, Japan

BROOKVALE UNION GINGER BEER Alcoholic Ginger Beer, NSW

VICTORIA BITTER Lager, VIC

SÖH/PINT/JUG

7/9/20

8/11/28

13(G)/33(JUG)

10/13/30

10/13/30

8/11/28

## BOTTLED

APPLE CIDER | 11

LYCHEE GOLD 8% | 13

KOREAN SOJU | 18

Your choice of flavour:

Lychee, Strawberry, Peach, Grape



## COCKTAIL

MANGO BELLINI 16

Mango, orange, bubbles

YUZU SPRITZ 18

Yuzushu, shochu, apérol, bubbles

PASSIONFRUIT MOJITO 17

Rum, passionfruit, lime, mint, cucumber

STRAWBERRY DAIQUIRI 17

Rum, strawberry, lime

BLUE LOTUS 19

Alize bleu, rum, pineapple, lime

LYCHEE BLOSSOM MARTINI 19

Gin, lychee, cherry blossom, yuzu

MINT TO BE MELON 18

Gin, melon, lime, lemon

STRAWBERRY SWING 16

Gin, strawberry, lime, bubbles

TOKYO COLLINS 19

Gin, mango, yuzu

COCONUT PIE 19

Coconut cream, coconut rum, pineapple, mango

PINK ROYAL TEA 16

Pink gin, spiced rum, elderflower, grapefruit

ROSE PASSION 20

Alize rose, rum, pineapple, lime

SALTED CARAMEL ESPRESSO MARTINI 48

Vodka, espresso, salted caramel

YUZU MARGARITA 20

Tequila, cointreau, yuzu, lime

MEXICAN MULE 17

Tequila, ginger beer, lime

MELON SLIPPER 18

Gin, midori, grapefruit, lemon

CHERRY BLOSSOM ICE TEA 19

Vodka, gin, tequila, rum, cointreau, cherry blossom, yuzu

MOMO PEACH 18

Peach schnapps, rum, lemon, grapefruit

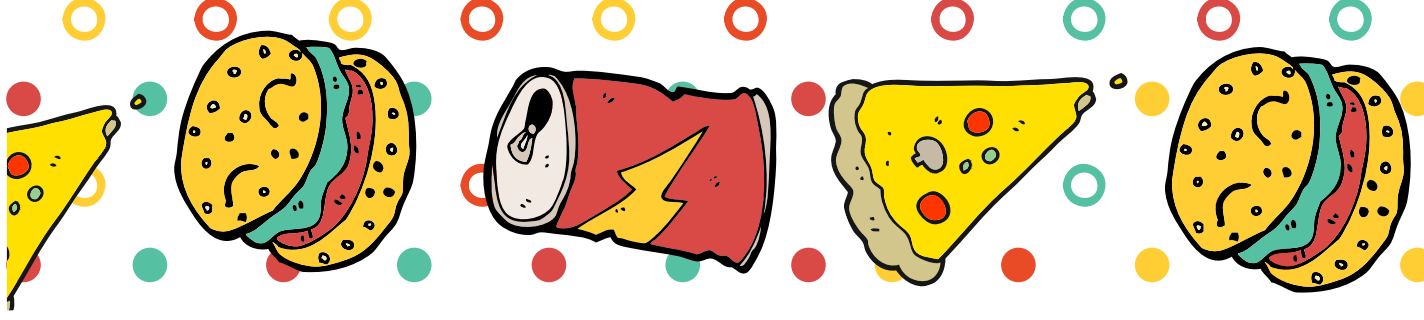
PRINCESS MARTINI 19

Peach schnapps, rum, lemon, grapefruit

NEGRONI 18

Campari, gin, martini rosso

please see the drink menu for more, mocktail, shot, wine, sake, whiskey, gin and other spirits



# KIDS MENU

## MEALS

### CLASSIC MINI CHEESEBURGER | 12

W/ CHIPS, ANGUS BEEF, ICEBERG LETTUCE, TOMATO, PICKLES, MUSTARD, KETCHUP

### KARAAGE & CHIPS | 12

JAPANESE CHICKEN BITE, CHIPS, MAYO

### TROPICAL PIZZA 9' | 12

TOMATO SAUCE, PINEAPPLE, HAM, CHEESE

### CHEESE PIZZA 9' | 12

TOMATO SAUCE, CHEESE

## DESSERTS

### FRUIT TRUFFLE [MCN/V/DF] 10

FRUIT PIECES & BROWNIE BATHED IN CUSTARD & CONDENSED MILK

### JAPANESE BINGSU [GF/NG/V/DF] 9

HONEY YUZU ICE FLAKES TOPPED WITH HONEY AND FRUIT PIECES

## DRINKS

### GLASS OF SOFT DRINK | 4

PEPSI, MAX, LEMONADE, SUNKITS, SOLO

### GLASS OF JUICE | 5

PINEAPPLE, ORANGE, APPLE

*Make it a Set \$19*

**One Meal + One Dessert + One drink**